

# Low voltage lighting transformer

## Type LF-6P

Short circuit proof safety isolating transformer for 12V lighting installations. Equipped with 6 pairs of output terminals. Designed and tested according to norm EN61558-2-6. CE marked. Separate windings, moulded in self-extinguishing Polyurethane and plastic capsulated. Insulation class II, double isolated. Short circuit proof and protected against overload with PTC-fuse on every output terminal. Protected against unusually high operation temperature with thermal fuse.



Variable secondary output by using the 230 or 250 Volt primary terminals.

### Applications:

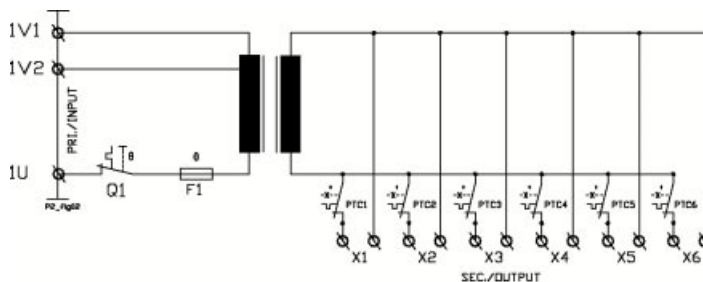
Transformer for 12V lighting installations and else where it is required safety isolating transformer approved according to CE directives.

Fully dimmable with dimmers designed for transformer loads.

## Technical specifications

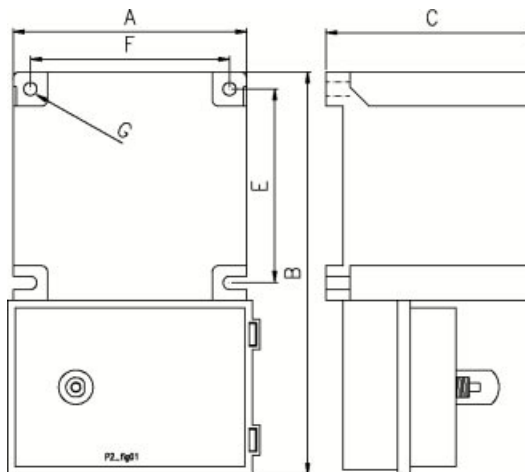
- Input voltage: 230-250V
- Frequency: 47-63Hz
- Output voltage: 6x11,5V
- According to: EN61558-2-6
- Test/insulating voltage: 4kV AC RMS
- Construction class: II
- Insulation class: B (130°C)
- Ambient temp. ( $t_a$ ): 40°C
- Degree of protection: IP23

## Wiring diagram



Maximum 50 Watt load per output.

## Dimensions



## Standard types

Type	Voltage Sec. (V)	Connection (W)	Power (VA)	Fuse Built-in (A)	Dimensions AxBxC (mm)	Weight (Kg)	Art. no.
LF 120-10/6P	11,5	6x20	120	0,8 auto	118x164x82	2,5	3-050-100121
LF 210-16/6P	11,5	6x35	210	1,2 auto	118x169x93	4,2	3-050-100211
LF 300-24/6P	11,5	6x50	300	1,8 auto	118x186x98	4,2	3-050-100311