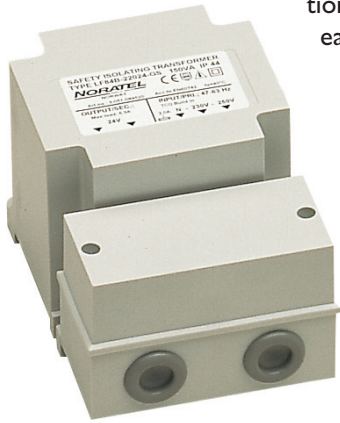


24 VDC - max. 5% ripple

Type LF-RC

Single-phase DC power supply with RC filter and secondary voltage 24VDC. Max. residual ripple approx. 5%. Designed and tested according to norm EN61558-2-6. Separate insulated windings moulded in self-extinguishing polyurethane and capsulated in plastic, IP44. Insulation class II. Protected against short circuit and overload with glass tube fuse, and protected against unusually high operation temperature with thermal "cut-out". Compact design. Separate windings and built in fuse ensures safe operation. For fixed installation, simple and easy assembly on wall or ceiling.



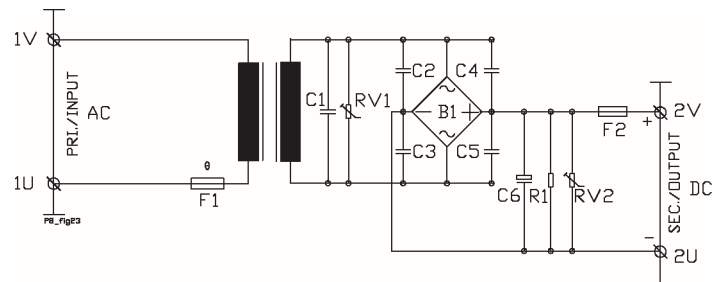
Application:

DC power supply designed for PLC, electronic control cards and other electronics requiring DC voltage with maximum 5% residual ripple.

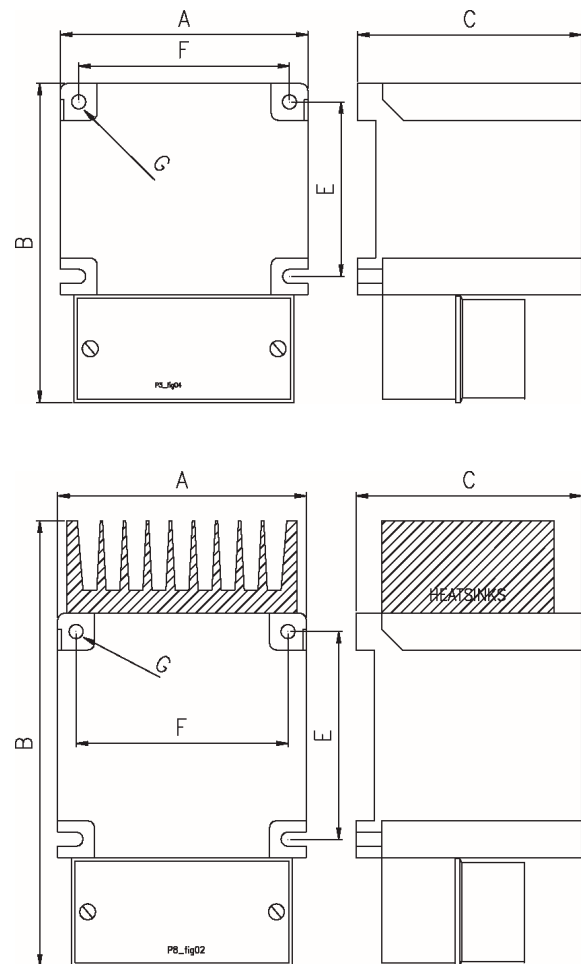
Technical specifications

- Input voltage: 230V +/-6%
- Frequency: 47-63Hz
- Output voltage: 24VDC
- Max Ripple: 5% RMS
- Efficiency: >77%
- According to: EN61558-2-6
- Test/insulating voltage: 4kV AC RMS
- Construction class: II
- Insulation class: B (130°C)
- Ambient temp. (t_a): 40°C
- Degree of protection: IP44

Wiring diagram



Dimensions



| Type | Voltage Sec.DC (V) | Current Sec. (A) | Power (VA) | Losses (W) | Dimensions AxBxC (mm) | Weight (Kg) | Art. no. |
|-----------------|-----------------------|---------------------|---------------|---------------|--------------------------|----------------|--------------|
| LFRC66B2024-GS | 24 | 1 | 24 | 8 | 73x124x61 | 1 | 3-192-100101 |
| LFRC84B2024-GS | 24 | 2 | 50 | | 92x130x87 | 1,5 | 3-192-000006 |
| LFRC96C2024-GS | 24 | 3,2 | 75 | 20 | 106x153x98 | 2,5 | 3-192-100400 |
| LFRC96CK2024-GS | 24 | 4 | 100 | 25 | 108x193x98 | 3,2 | 3-192-100500 |